

# Computational Aerodynamics Questions & Answers

## Question by Student 201227106

*Professor, I think Assignment 3 has a problem. In question #2,  $Q$  is consist of  $\omega U$ , but I think  $Q$  is consist of  $\omega \gamma U$ .*

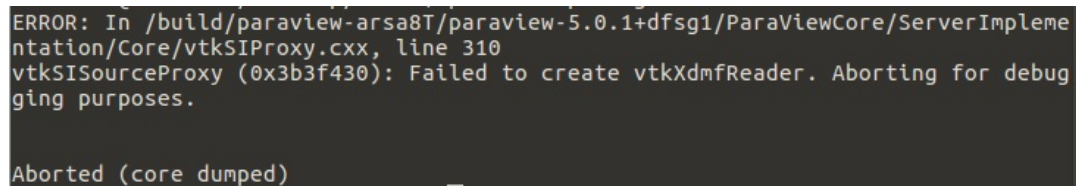
That's right: I fixed it. I'll give you 1 point bonus boost because your typesetting was hard to read.

## Question by Student 201227141

*Professor, Q3 in Assignment3 is finding  $G_\eta$  at nodes. Although Equation has  $\Omega$ , it did not need to calculate. Then is it not problem whatever  $\Omega$ 's value is?*

Yes, absolutely, you don't need to calculate  $\Omega$  in this case. But if you choose not to calculate it, you have to explain clearly how  $\Omega$  cancels out. Once  $\Omega$  disappears from the terms, then there is of course no need to calculate it. Good observation: 2 points bonus.

## Question by Student 201427102



```
ERROR: In /build/paraview-arsa8T/paraview-5.0.1+dfsg1/ParaViewCore/ServerImplementation/Core/vtkSIProxy.cxx, line 310
vtkSIProxy (0x3b3f430): Failed to create vtkXdmfReader. Aborting for debugging purposes.

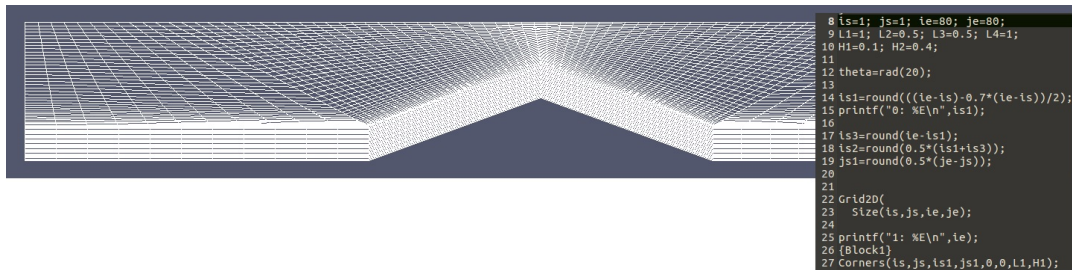
Aborted (core dumped)
```

*after write "paraview post.grid", that message appear. How can I solve this problem?*

*"ERROR: In /build/paraview-arsa8T/paraview-5.0.1+dfsg1/ParaViewCore/ServerImplementation/Core/vtkSIProxy.cxx, line 310  
vtkSIProxy (0x3b3f430): Failed to create vtkXdmfReader. Aborting for debugging purposes. Aborted (core dumped)"*

Well, the file name should end with .vtk in order to be read in paraview.. I'll give you 1 point bonus boost.

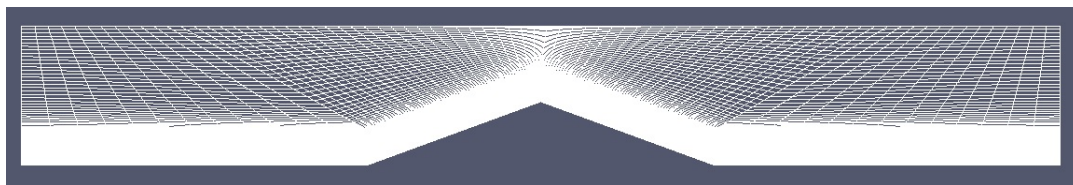
## Question by Student 201427564



*Professor, I have a question about last Tuesday class. In attached figure, You coded  $is=1$ ,  $js=1$  in line 8. But you put zero in command 'Corners' in line 27. It works well but I can not understand. Please explain the reason. Also, I think  $is3$  should be declared before  $is2$ . Because  $is2$  contains  $is3$ . Am I right?*

The first two zeros in the Corners() command are for the  $x$  and  $y$  positions of the lower-left corner. The next two values are for the  $x$  and  $y$  positions of the upper-right corner. For the second question, yes, if  $is2$  depends on  $is3$ , then you should initialize  $is3$  before initializing  $is2$ . Two points bonus boost.

### Question by Student 201427564

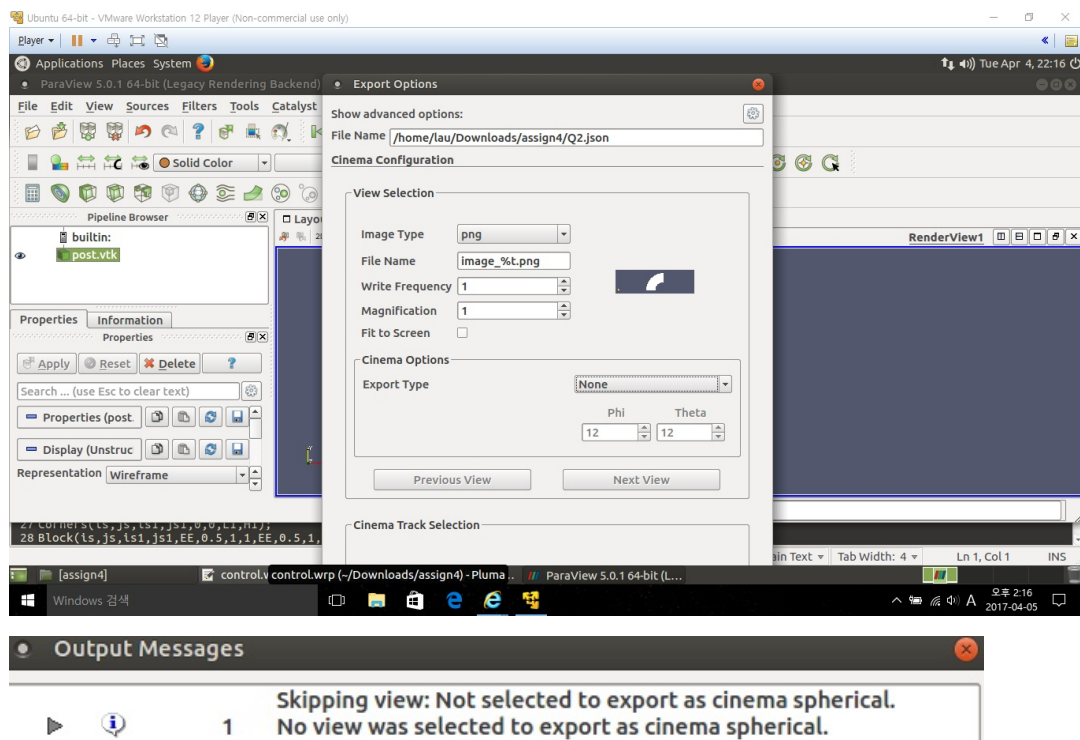


*Professor, when you did this example you coded Block1 and Block4 again(I mean you coded twice for one block.). When I try to coded only {Block1 again!} and {Block4 again!}, it did not work. Could you explain me the reason?*

Hm, I don't understand what could be wrong.. You need to explain this more carefully.

### Question by Student 201227141

*Professor, I think i did assignment. And i found export button in paraview but i could't see the bottom side of the export page. So i just pushed enter of my keyboard but exporting didn't work. How can i do well?*



An easy way around this is by moving the window so you can see the buttons at the bottom. You can move the window by pressing the key “alt”, the left mouse button, and moving the mouse around. Alternately, you can increase the resolution of your screen, but this is more involved..